

# MANISCOPIC

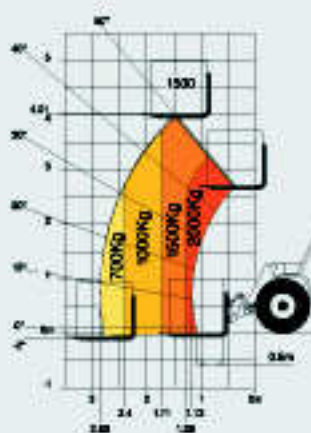


**BUGGISCOPIC  
BT 420/BT 425  
BTI 220/BTI 225**

**4.00 m  
2000 kg/2500 kg**

- 2 or 4 wheel drive

**COMPACT**



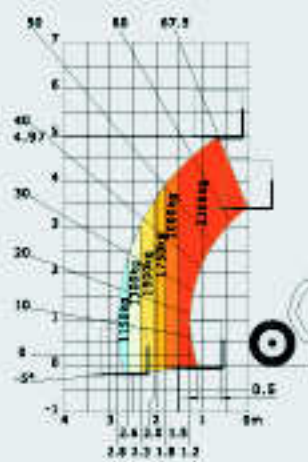
**BT 420**

**MT 523  
MLT 523 T**

**4.90 m  
2300 kg**

- Width : 1.80 m
- Engine : 57 HP/43 kw (MT)  
73 HP/55 kw (MLT)
- Height : 1.98 to 2.01 m

**COMPACT**



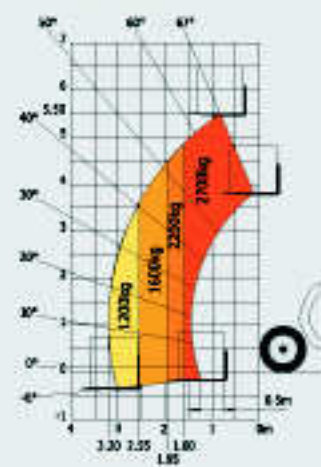
**MT 523/MLT 523 T**

**MLT 526  
MLT 627 T**

**5.15 m/5.55 m  
2600 kg/2700 kg**

- Width : 2.01 m
- Engine : 86 to 101 HP (Turbo)
- Height : 2.06 to 2.30 m

**COMPACT**



**MLT 627 T**

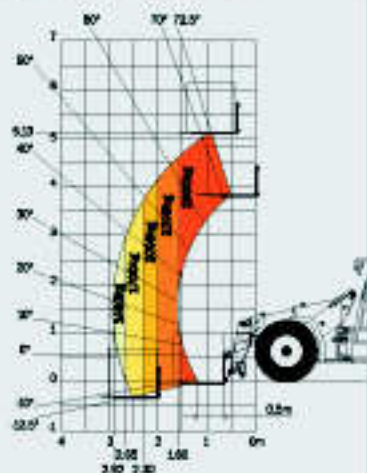
	<b>BT 420</b>	<b>MT 523/MLT 523 T</b>	<b>MLT 627 T</b>
Nominal capacity	2000 kg	2300 kg	2700 kg
Maximum lift height	4.00 m	4.90 m	5.50 m
Maximum forward reach	2.83 m	2.80 m	3.20 m
Reach with 1 ton	2.40 m	2.80 m	3.20 m
Reach with 1.5 ton	1.71 m	2.30 m	2.55 m
Tipping load at maximum reach	1030 kg	1535 kg	1581 kg
Drawbar pull	2540 daN	3400 daN	7100 daN
Engine power (HP/kw)	39/28.7	57/43 - 73/55	101/74.5
Turning radius	3.24 m	3.08 m	3.64 m
Outside forks turning radius	3.51 m	4.12 m	4.58 m
Overall height/width	1.98/1.43 m	2.01 m/1.80 m	2.06 m/2.01 m
Length up to carriage	3.55 m	4.20 m	4.69 m
Front tyres	11,5/80 15,3 12 PR	12,5 - 80 - 18 SGI (MLT 523)	400/70-20 T 37
Rear tyres	28 x 9,15 IC 40 14 PR	12,5 - 80 - 18 SGI (MLT 523)	400/70-20 T 37
Weight unladen with forks	4610 kg	5200 kg	5935 kg

# MLA 628 - 120 LSU POWERSHIFT

**5.11 m/5.13 m**  
**2500 kg/2800 kg**

- Engine : 123 HP (Turbo 120)

ARTICULATED

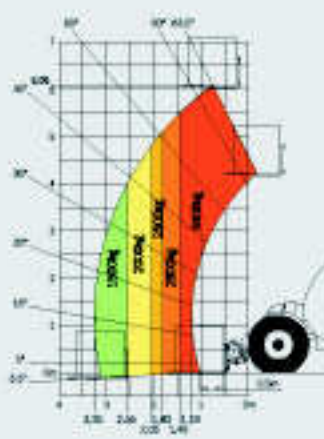


**MLA 628**

# MLT 630/634 MVT 628 T

**6.05 m/6.30 m**  
**2800 kg to 3400 kg**

- Engine : 101 HP (Turbo)  
123 HP (Turbo 120)

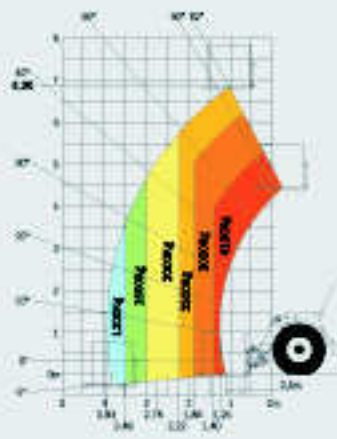


**MLT 634**

# MLT 731 MLT 741 MLT 742 MLT 742 HT LSU

**6.90 m**  
**3100 kg to 4200 kg**

- Engine : 101 HP (Turbo)  
123 HP (Turbo 120)

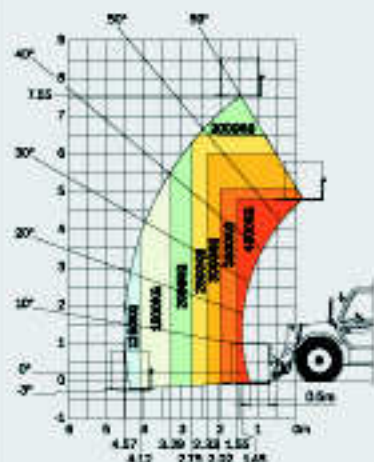


**MLT 741 - 120 LSU**

# MLT 845 HT LSU MLT 845 - 120 LSU MLT 940 L - 120 LSU MT 940 LT

**7.55 m/8.97 m**  
**4000 kg/4500 kg**

- Engine : 101 HP (Turbo)  
123 HP (Turbo 120)



**MLT 845 - 120 LSU**

2800 kg	3400 kg	4100 kg	4500 kg
5.13 m	6.05 m	6.90 m	7.55 m
2.92 m	3.25 m	3.93 m	4.57 m
2.92 m	3.25 m	3.93 m	4.57 m
2.65 m	3.25 m	3.49 m	4.12 m
1852 kg	2030 kg	1750 kg	1610 kg
9400 daN	8600 daN	9100 daN	9000 daN
123/90.5	101/74.5 (T120 : 123/90.5)	123/90.5	123/90.5
4.25 m	3.70 m	3.85 m	4.15 m
4.50 m	4.63 m	4.86 m	5.17 m
2.64 m/2.22 m	2.30 m/2.30 m	2.30 m/2.30 m	2.56 m/2.39 m
5.21 m	4.57 m	4.91 m	5.22 m
17,5 LR 24 XM 27	17,5 LR 24 XM 27	17,5 LR 24 XM 27	445/70 R 24 IT 510
17,5 LR 24 XM 27	17,5 LR 24 XM 27	17,5 LR 24 XM 27	445/70 R 24 IT 510
6680 kg	6950 kg	7420 kg	8285 kg

**MVT 665 T/675 T**  
**MHT 7140 T**  
**MHT 10120 LT**  
**MHT 10160 LT**

**6.00 m/9.70 m**  
**6500 kg/16000 kg**

- Engine : 106 HP Turbo (MVT)  
Turbo 170 HP (MHT)
- Hydrostatic transmission



**MT 732**  
**MT 932**

**6.90 m/9.00 m**  
**3200 kg**

- Engine : 84 HP



**MT 1033 HLT**  
**MT 1030 S\***

**9.60 m/9.98 m\***  
**3300 kg/3000 kg\***

- Engine : 84 HP\*/100 HP
- Levelling system
- Hydrostatic transmission
- Stabilizers
- Torque convertor



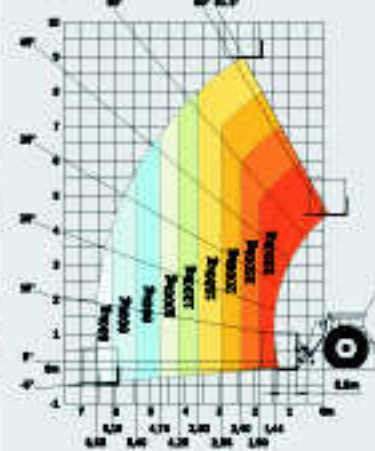
**MT 1235 S/ST**  
**MT 1240 LT\***

**12.00 m/11.64 m\***  
**3500 kg/4000 kg\***

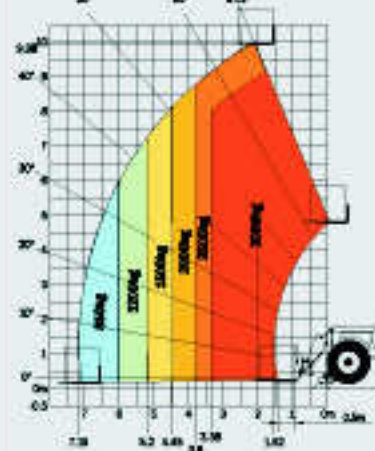
- Stabilizers or levelling system\*



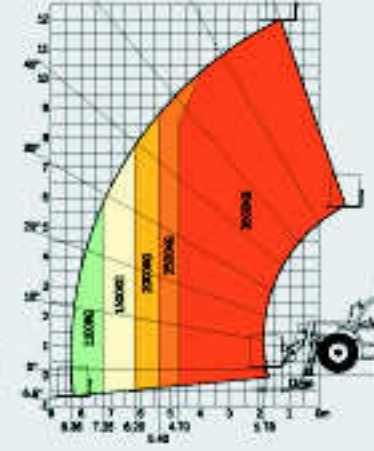
**MHT 10160 LT**



**MT 932**



**MT 1030 S**



**MT 1235 S/ST**

16000 kg

9.70 m

5.50 m

5.50 m

5.50 m

5580 kg

15500 daN

170/125

5,44 m

6,81 m

2,93 m/2,50 m

6,60 m

16,00 R25 XRB

16,00 R25 XRB

23615 kg

3200 kg

9.00 m

6.58 m

4.75 m

3.60 m

673 kg

8400 daN

84/61.5

3,67 m

4,77 m

2,30 m/2,26 m

4,71 m

400/80 - 24 TL 156 B

400/80 - 24 TL 156 B

7640 kg

3000 kg

9.98 m

7.15 m

6.00 m

5.20 m

1160 kg

8200 daN

84/61.5

3,75 m

4,95 m

2,30 m x 2,26 m

4,99 m

400/80 - 24 TL 156 B

400/80 - 24 TL 156 B

7470kg

3500 kg

12 m

8.36 m

8.36 m

7.25 m

1465 kg

8600 daN

84/61.5 - 100/74.5

4,15 m

5,39 m

2,57 m/ 2,32 m

5,60 m

400/80 - 24 TL 156 B

400/80 - 24 TL 156 B

8960 kg

**MT 1335 SL**  
**MT 1335 H SLT\***  
**MT 1340 SLT\***

**13.00 m**  
**3500 kg/4000 kg**

- Stabilizers and levelling system



**MT 1740 SLT**  
**MT 1740 SLT ULTRA\***  
**MT 1745 HSLT\***

**16.58 m/16.65 m**  
**4000 kg/4500 kg**

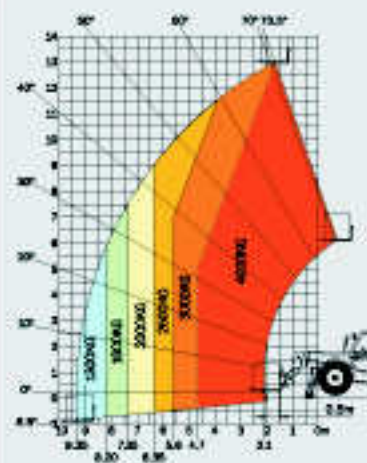
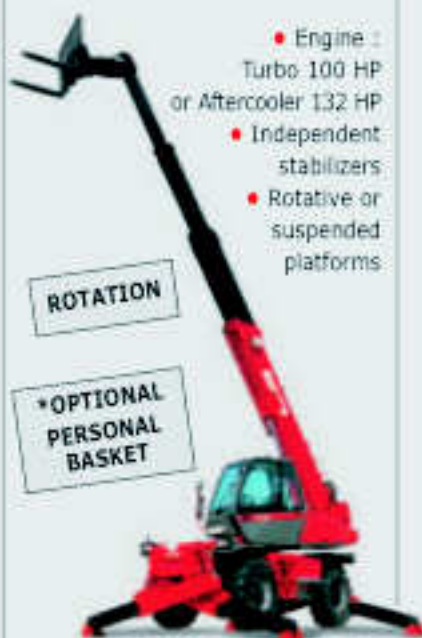
- Engine : 100 HP
- Stabilizers and levelling system



**MRT 1432/1542**  
**MRT 1635/1742**  
**MRT 1850/2150**  
**MRT 2540/2440 EPS**

**13.82 m to 24.60 m**  
**3200 kg to 4999 kg**

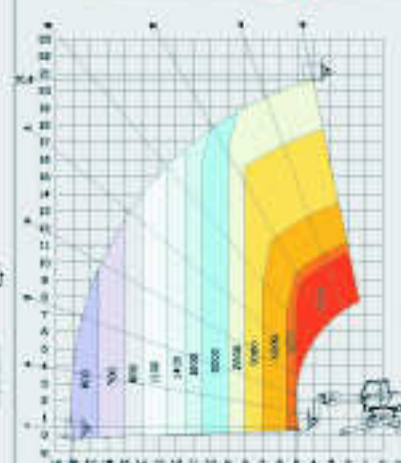
- Engine : Turbo 100 HP or Aftercooler 132 HP
- Independent stabilizers
- Rotative or suspended platforms



**MT 1340 SLT**



**MT 1740 SLT**



**MRT 2150 M Series**

4000 kg	4000 kg	4999 kg	Nominal capacity
13 m	16.65 m	20.60 m	Maximum lift height
9.35 m	12.35 m	18.10 m	Maximum forward reach
9.35 m	10.20 m	14.00 m	Reach with 1 ton
8.20 m	8.20 m	11.50 m	Reach with 1.5 ton
1710 kg	957 kg	-	Tipping load at maximum reach
9400 daN	9700 daN	10800 daN	Drawbar pull
84/61,5 - 100/74,5	100/74,5	132/91	Engine power (HP/kw)
4.16 m	4.16 m	4.50 m	Turning radius
5.69 m	5.70 m	-	Outside forks turning radius
2,60 m/2,42 m	2,60 m/2,42 m	3,02 m/2,42 m	Overall height/width
5.96 m	5.98 m	6.78 m	Length up to carriage
440/80 - 24 T37 158 B	440/80 - 24 T37 158 B	18 - 22,5	Front tyres
440/80 - 24 T37 158 B	440/80 - 24 T37 158 B	18 - 22,5	Rear tyres
10790 kg	11220 kg	16095 kg	Weight unladen with forks





# Manitou, material handling world leader

Inventor of the rough terrain forklift truck, Manitou offers today the most comprehensive range to meet all specific handling and personal lifting requirements :

Telescopic trucks

**MANISCOPIC**

Rough terrain  
and semi industrial  
masted trucks

**MANITOU**

Access  
equipment

**MANIACCESS**

Compact telescopic  
handler

**Twisto**

Truck mounted forklifts

**MANITRANSIT**

Backhoe/Loader  
with telescopic boom

**MANILOADER**

Swinging arm  
and articulated  
wheeled loaders

**MANILOADER**



## A network of skilled professionals at your service

With a network of 500 service and parts centres in more than 100 countries, Manitou provides an efficient after-sales support based on the expertise of 2000 factory trained technicians.

The publication of this advertisement is for information only and the company reserves the right to alter specifications without notice.  
The MANITOU models presented in this brochure can be equipped with various optional equipment attachments.

CE



**MANITOU**